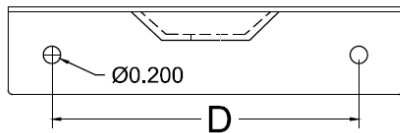
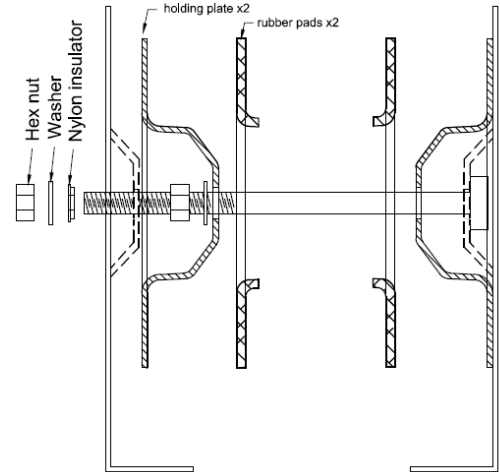
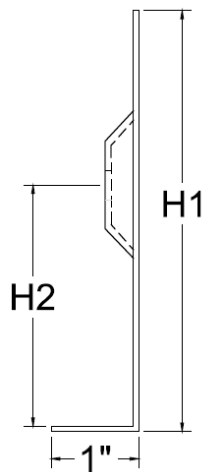
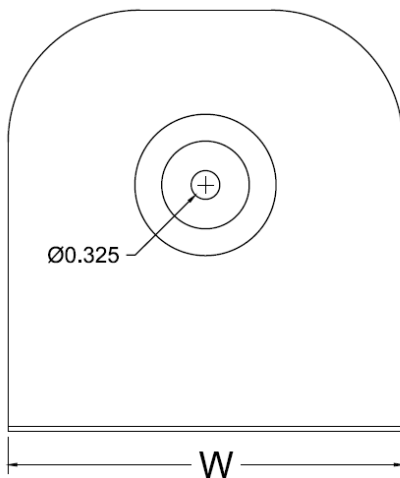


This CL toroidal transformer vertical mount brackets are built for strength and durability, using 0.08" thick steel to provide a solid support system. They are designed to work with many different transformer makes and models, ranging from 50VA to 800VA. This bracket offers three sizes for customers to choose from, ensuring a perfect fit for their needs. The vertical mounting feature not only keeps the transformer secure but also makes the setup safe and reliable.

Additionally, the bracket's compact design allows the transformer to fit into tight spaces, making it a great choice for areas where space is limited. This design makes the most of the available space without sacrificing performance or ease of installation, making the toroidal transformer vertical mount bracket an excellent choice for various applications.

These brackets are designed for LK chokes, MP/MS output transformers, AN/AS/AU series power transformers, and other standard toroidal transformers. They are finished with a powder coat in semi-gloss black, providing a sleek and durable surface that enhances their appearance and longevity.

Antek has recently introduced a new vertical mounting system for 500VA to 800VA transformers. This system enhances stability and durability by utilizing support at both ends, ensuring reliable performance and structural integrity. Additionally, an insulator is incorporated to interrupt the continuity of the support loop, effectively preventing short circuits and enhancing safety.



CL-500D includes
2 L bracket, 2 holding plates, 2 rubber pads,
bolt, 2 hex nuts, 3 washers, insulator and
spring washer.

Model	Suitable Transformers	W	D	H1	H2	Weight
CL-100	50VA - 100VA power transformers	4.0"	3.0"	4.0"	2.25"	0.3LB
CL-200	200VA - 300VA power transformers	4.5"	3.5"	4.8"	2.75"	0.5LB
CL-400	400VA and up power transformers	5.0"	4.0"	5.3"	3.00"	0.7LB
CL-500D	500VA - 800VA power transformers	5.0"	4.0"	5.3"	3.00"	2.0LB